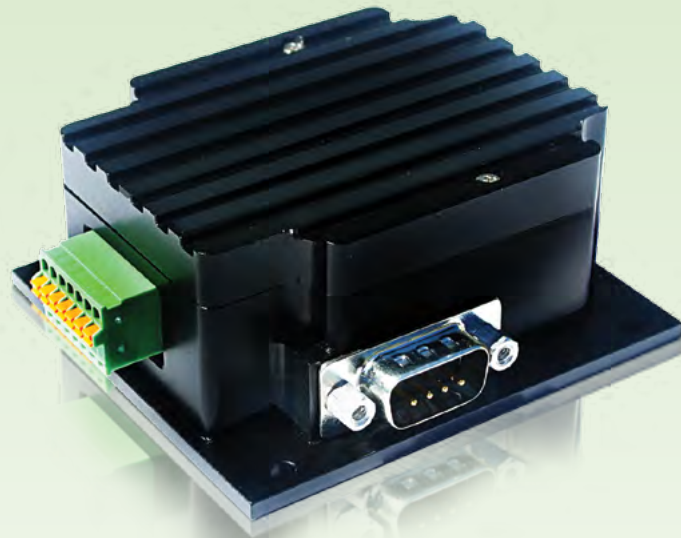




FEATURES

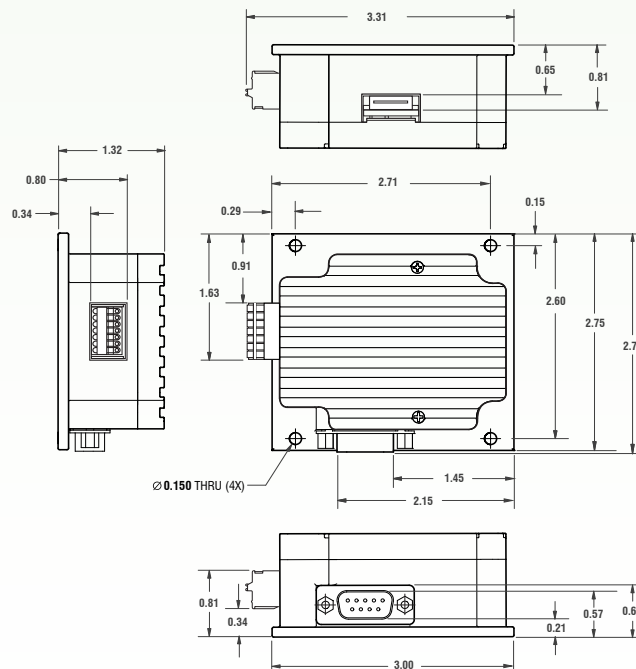
- Operates from +12 to 75 VDC
- Software selectable run currents from 0.1 to 5.0 Amp Peak (in 0.05 Amp increments)
- Software selectable hold currents from 0.1 to 5.0 Amp Peak (in 0.05 Amp increments)
- Step Resolutions from Full, 2x, 4x, 5x, 8x, 10x, 16x, 25x, 32x, 50x, 64x, 125x, 128x, 250x, 256x Microstepping
- Four Selectable Damping modes for smooth motion
- No low minimum inductance
- Step sensing on the rising or falling edge of step pulse input
- Direction switching – to change initial powered on direction of rotation
- Disable active high or low – to allow unit to be disabled with a high or low signal
- Smooth motion
- Three optically isolated control inputs (step, direction, disable)
- Inputs are sinking inputs, maximum current input is 15mAmps
- Pole Damping™ Technology - Integrated within driver board (see page 8)



SPECIFICATIONS

- **INPUT VOLTAGE:**
+12 to 75 VDC
- **DRIVE CURRENT (PER PHASE):**
0.1 to 5.0 Amps Peak in 0.05 Amp increments
- **ISOLATED INPUTS:**
Step, Direction, and Disable
- **STEP FREQUENCY (MAX):**
5 MHz
- **STEPS PER REVOLUTION (1.8 MOTOR):**
200, 400, 800, 1600, 2000, 3200, 5000, 6400, 10000, 12800, 25000, 25600, 50000, 51200
- **MICROSTEP RESOLUTIONS (1.8° MOTOR):**
Full, 2X, 4X, 5X, 8X, 10X, 16X, 25X, 32X, 50X, 64X, 125X, 128X, 250X, 256X
- **POLE DAMPING TECHNOLOGY™:**
See page 8

DIMENSIONS





FEATURES

- Input Voltage of +12 to 40 VDC
- Phase Current Ranges from 0.3 to 2.0 Amps Peak
- Microstepping Capabilities of Full, 2x, 4x, 8x, 16x, 32x, 64x, 128x, and 256x
- 2 User Configurable Digital I/O's
- 2 Dedicated Inputs:
 - * 1 Optical Sensor for Homing
 - * 1 Switch Closure to Ground
- Fully Programmable Ramps and Speeds
- Software Selectable Hold and Run Currents
- Stand Alone Operation with No Connection to PC
- Stores up to 16 Different Programs at Once with 4 kBytes of Memory
- RS485 Communication with Optional Converter Cards

Converter Cards Available

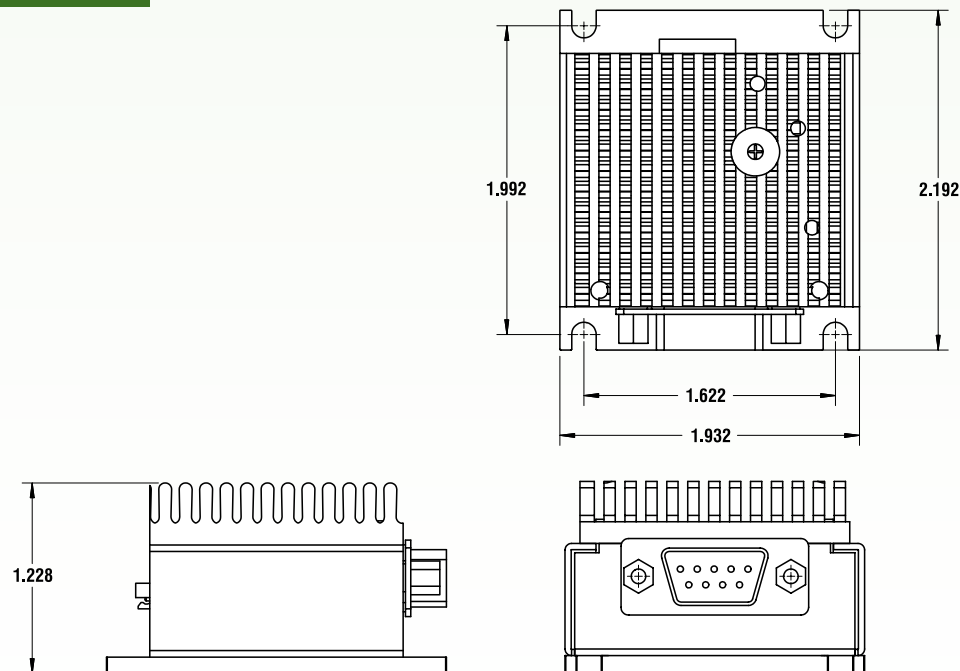
- USB485 - see page 110
- RS232 to RS485 - see page 109



SPECIFICATIONS

- **INPUT VOLTAGE:**
+12 to 40 VDC
- **DRIVE CURRENT (PER PHASE):**
0.3 to 2.0 Amps Peak
- **ISOLATED INPUTS:**
I/O, Switch Closure Ground, Opto Phototransistor
- **STEPS PER REVOLUTION (1.8° MOTOR):**
200, 400, 800, 1600, 3200, 6400, 12800, 25600, 51200
- **MICROSTEP RESOLUTIONS (1.8° MOTOR):**
Full, 2x, 4x, 8x, 16x, 32x, 64x, 128x, 256x

DIMENSIONS



FEATURES

- Input Voltage of +12 to 40 VDC
- Phase Current Ranges from 0.3 to 3.0 Amps Peak
- Microstepping Capabilities of Full, 2x, 4x, 8x, 16x, 32x, 64x, 128x, and 256x
- 2 User Configurable Digital I/O's
- 2 Dedicated Inputs:
 - 1 Optical Sensor for Homing
 - 1 Switch Closure to Ground
- Fully Programmable Ramps and Speeds
- Software Selectable Hold and Move Currents
- Stand Alone Operation with No Connection to PC
- Stores up to 16 Different Programs at Once with 4 kBytes of Memory
- RS485 Communication with Optional Converter Cards

Converter Cards Available

- USB485 - see page 110
- RS232 to RS485 - see page 109



SPECIFICATIONS

- **INPUT VOLTAGE:**
+12 to 40 VDC
- **DRIVE CURRENT (PER PHASE):**
0.3 to 3.0 Amps Peak
- **ISOLATED INPUTS:**
4 I/O's, Switch Closure to Ground, Opto Phototransistor
- **STEPS PER REVOLUTION (1.8° MOTOR):**
200, 400, 800, 1600, 3200, 6400, 12800, 25600, 51200
- **MICROSTEP RESOLUTIONS (1.8° MOTOR):**
Full, 2x, 4x, 8x, 16x, 32x, 64x, 128x, 256x

DIMENSIONS

