

- Universal Input
- Built in PFC Circuit
- 3000 V Isolation
- Single Outputs

Model Number	Output Voltage	Output Current _(max)	Min Load
Single Output			
PW-100-24	24 VDC	4.5 A	0A
PW-100-48	48 VDC	2.25 A	0A
PW-150-24	24 VDC	6.5 A	0A
PW-150-48	48 VDC	3.2 A	0A

INPUT SPECIFICATIONS

Voltage Range 88-264 VAC
Input Current 3.15 A / 115 VAC
 1.5A / 230 VAC
Frequency Range: 47-63Hz
Inrush Current Cold Start 30A / 115 VAC
Leakage Current <1mA / 240 VAC

OUTPUT SPECIFICATIONS

Voltage and Current See Selection Chart
Load Regulation (0%-FL) +/- 0.5%
Line Regulation +/- 0.5%
Voltage Tolerance +/- 1.0%
Ripple and Noise (max) 150m Vp-p
Over Voltage Protection 105 ~ 150%
 Shutdown; Re-power on
Overload Protection 105 ~ 150%, Constant 1 Limit
 Auto Recovery
Setup/ Rise/ Holdup 1s, 30ms, 15ms at full load
 (230 VAC)

GENERAL SPECIFICATIONS

Input-Out Isolation I/P-O/P: 300 VAC
 I/P-G: 1500 VAC
 O/P: 0.5KVAC
Isolation Resistance
 I/P-O/P, I/P-FG O/P-FG: 500VDC/100Ω
Efficiency (3.3 V through 48V) 83%, typ
Switching Frequency 135 Khz, (fixed, typical)
Safety EN60950 TUV File #R 9754834
 UL 1950 UL File # E183223

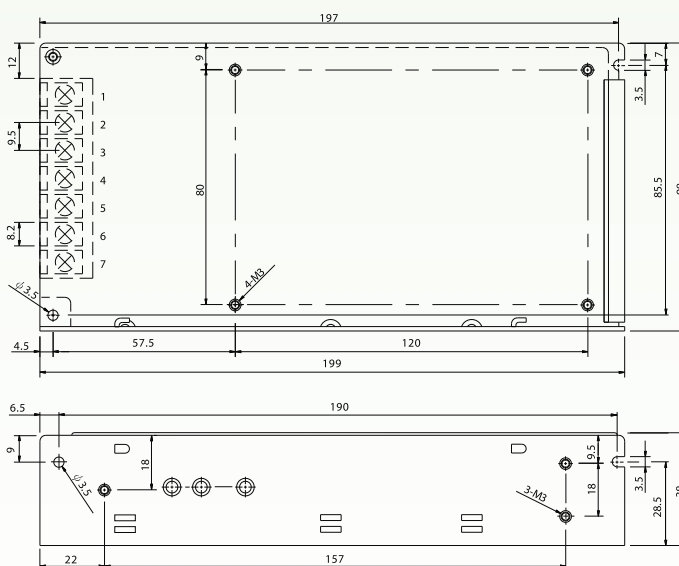
ENVIRONMENTAL SPECIFICATIONS

Oper. Temperature -10°C ~ +60°C
Storage Temperature -20 to +85°C
Relative Humidity 10% to 95%, non-cond *
Vibration 10 ~ 500Hz, 2G 10min./ 1cycle,
 Period for 60 min.
 Each Axis
EMC CISPR22 (EN55022)B,
 EN61000-4-2, 3, 5, 6, 8, 11
 ENV50204
 EN61000-3-2, 3
MTBF 314,900 Hrs

PHYSICAL SPECIFICATIONS

Size 3.0" x 8.7" x 1.6"
Construction Closed Frame
Weight 19.4 oz, (550g)

MECHANICAL SPECIFICATIONS



Notes:
 1. Dimensions are in mm
 2. Tolerance .xxx .01 (.253)
 .xx .02 (.508)

* These are stress ratings. Exposure of the devices to any of these conditions may adversely affect long term reliability. Proper operation under conditions other than the standard operating conditions is neither warranted nor implied.