

- NEMA 11, 1.8° Motor
- Up to 16 oz-in holding torque
- Vacuum Rating of 10^{-4} torr to 10^{-7} torr

■ FEATURES

The vacuum rated □

1.99." In order to make these small but powerful motors vacuum rated, Lin Engineering ensures that all of the special handling and parts necessary are used in the manufacturing process. First of all, all paint and oils are removed from the motor. Next, high temperature windings are utilized as well as Teflon leads. Lastly, depe□

are used. During the entire manufacturing process, latex gloves are worn to ensure that no residue from human touch is left behind on the motors. All of the above special parts and handling ensure that limited outgassing and contamination will occur.

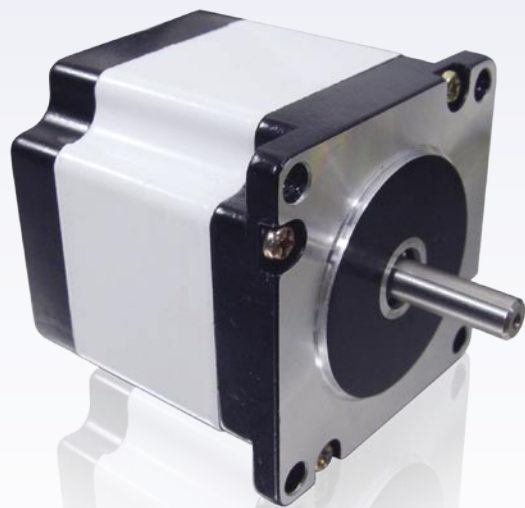
NEMA 17 and 23 vacuum motors are also available, please contact Lin Engineering for more information.

Note: See page 33 for motor specifications.

1.8° SIZE 17 & 23

WATER/DUST RESISTANT MOTOR

IP65



- Available in 1.8° NEMA 17 and 23
- Protected against dust
- Protected against low pressure jets of water

■ FEATURES

The IP65 Series of moto□

from a distance of 3 meters. These jets of water can carry pressure of up to 30 kPa from all directions at a rate of 12.5 l/min for the duration of 3 □

For **smaller or larger** IP65 motors, please contact Lin Engineering.