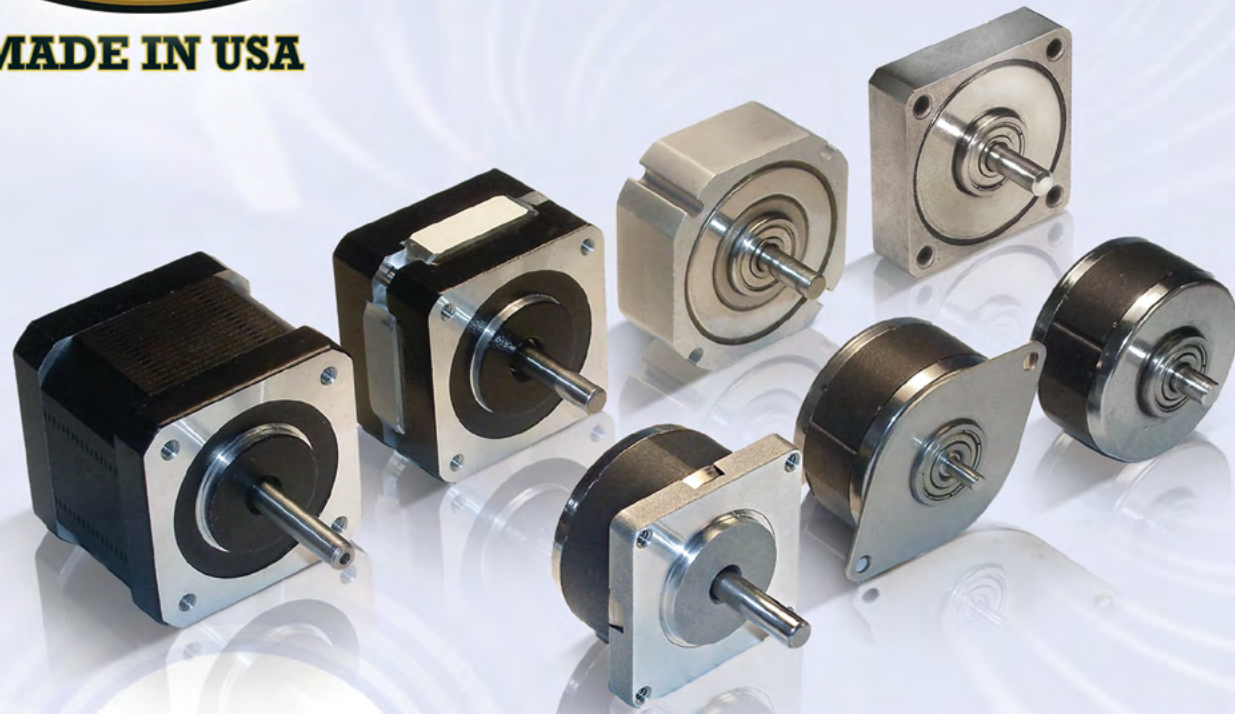




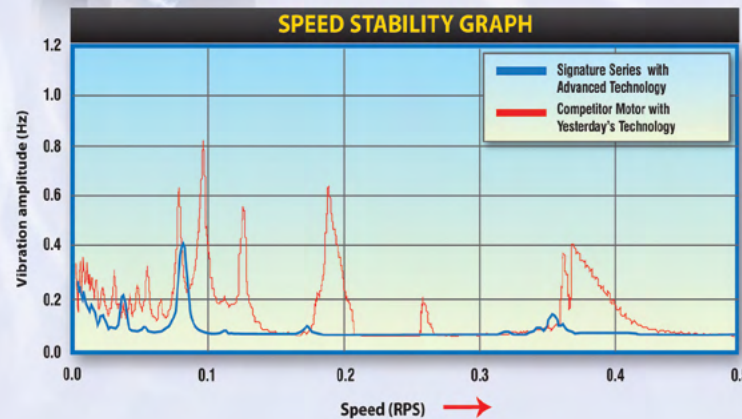
MADE IN USA

FOR:

- * Smooth Motion
- * High Accuracy & Reliability
- * Low Noise

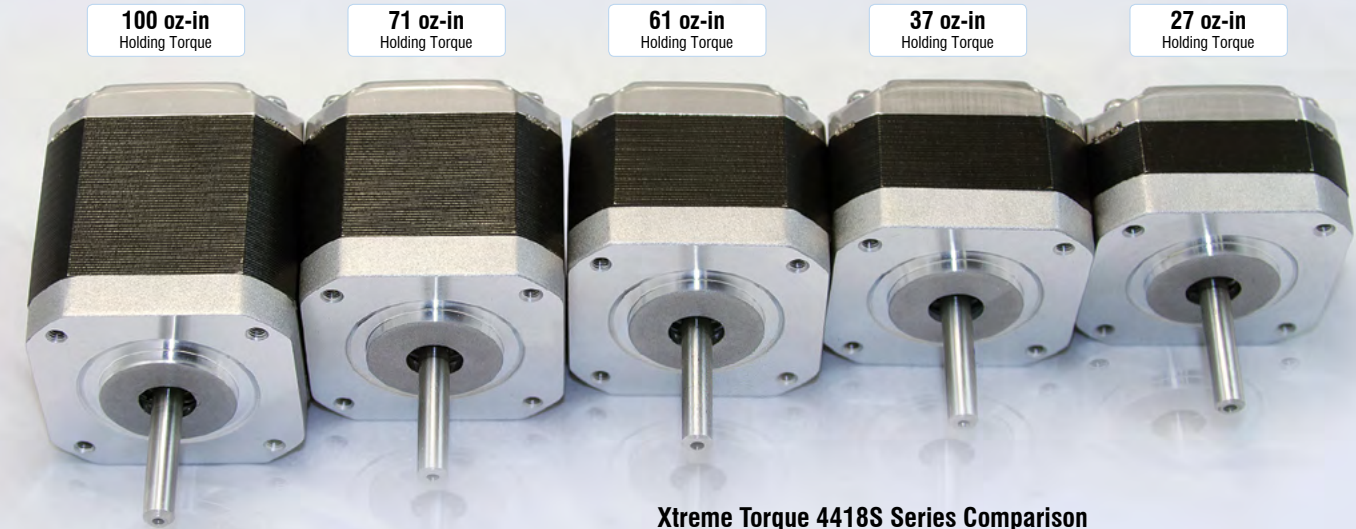


Reduce System Resonance by up to **50%**



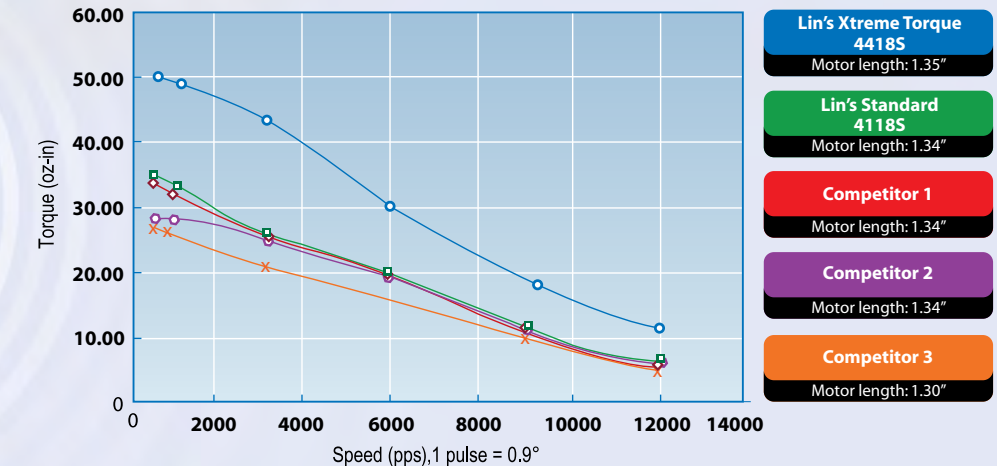
FOR:

- * High Torque & Reliability
- * Energy & Space Efficiency
- * Low Noise



Get Up to **35% MORE TORQUE** with the SAME POWER INPUT

Xtreme Torque 4418S Series Comparison
1.8° Step Motor, 24VDC, Rated Current, Bipolar, 1/2 Stepping



THE BENEFITS?

- * No Stalling
- * Better Heat Dissipation
- * Space Efficient

INDUSTRIES BEST USED FOR:

- * Medical
- * Printing
- * Semiconductor
- * Surveillance
- * Engraving
- * Automation

INDUSTRIES BEST USED FOR:

- * Medical
- * Printing
- * Semiconductor
- * Surveillance
- * Engraving
- * 3D Imaging